

2 EXTERIOR ELEVATION - RIGHT SIDE
3/8" = 1'-0"

EXTERIOR ELEVATION KEYNOTES	
Note Number	Note Text
1	PRE-ENGINEERED ALUMINUM CANOPY BY OTHERS; SEE SHOP DRAWINGS
2	NEON FLEX LIGHT
3	WALL MOUNTED SPEAKER SYSTEM
4	ADDRESS NUMBERS TO BE 8" TALL x 2" BRUSH STROKE
5	ELECTRICAL EQUIPMENT; SEE ELECTRICAL
6	FROST-PROOF HOSE BIBB
7	EXTERIOR WEATHER-PROOF OUTLET; SEE MEP
8	ROOF SCUPPER DRAIN - TYP OF 2
9	SURFACE MOUNTED SIGN BOX - TYP OF 3
10	TOP OF FOOTER. COORDINATE WITH CIVIL.

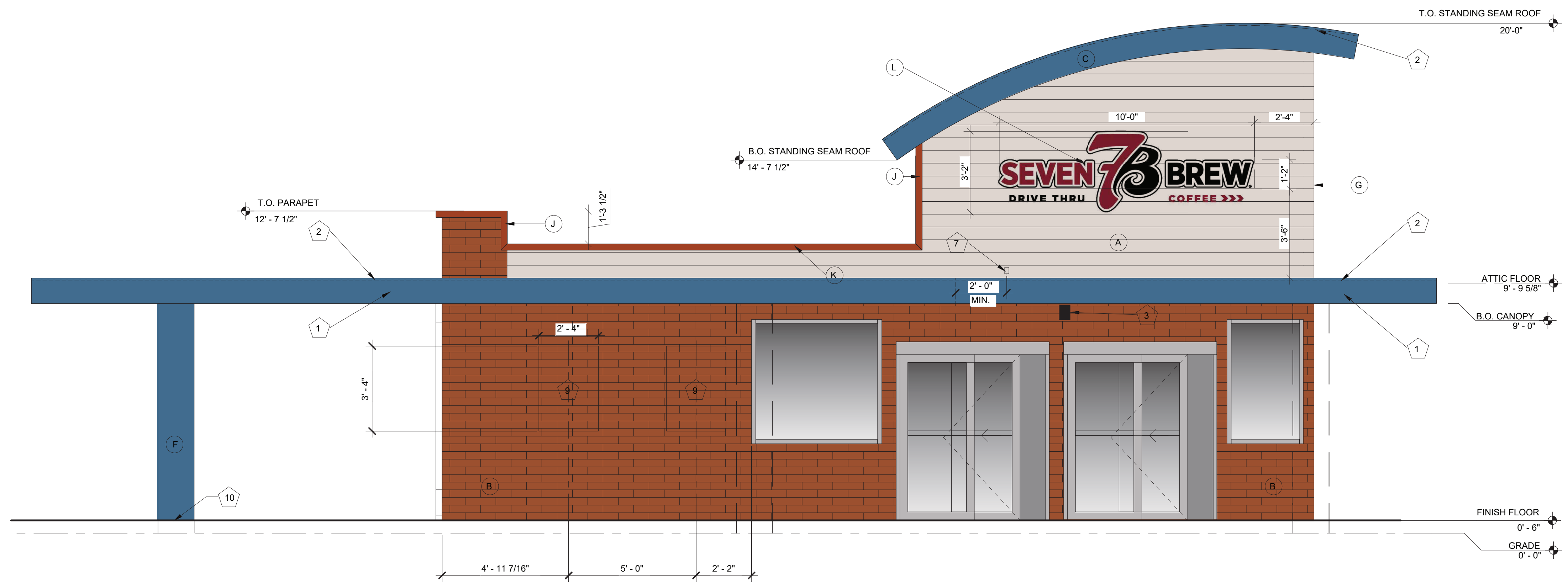
EXTERIOR ELEVATION MATERIALS LEGEND	
Note Number	Note Text
A	EIFS (PL-1)
B	MASONRY BOARD DECORATIVE WALL PANELS (BR-1)
C	REGAL BLUE BRAKE METAL FASCIA (MP-2)
D	REGAL BLUE SOFFIT PANELS (MP-2)
E	REGAL BLUE STANDING SEAM ROOF PANELS (MP-2)
F	REGAL BLUE BRAKE METAL (MP-2) ON COLUMN FURR-OUT (TYP.)
G	ROUND STOREFRONT SIGN; SUPPLIED AND INSTALLED BY SIGN CONTRACTOR
H	1/4" THICK ACRYLIC SIGNAGE APPLIED TO SIDING WITH VH DOUBLE SIDE TAPE
J	COLONIAL RED BRAKE METAL CAP (MP-3)
K	ZINC GRAY BRAKE METAL CAP (MP-4) (SHOWN SHADED)
L	ILLUMINATED STOREFRONT SIGNAGE BY SIGN CONTRACTOR

primary material
secondary material



Robert M. Busch
License #: AR11000122
Exp. Date: 12/31/2022

7 BREW DRIVE-THRU
2437 N. Lebanon Street
Lebanon, Indiana 46052



1 EXTERIOR ELEVATION - LEFT SIDE
3/8" = 1'-0"

A2.1
EXTERIOR ELEVATIONS
6 June 2022 - PERMIT

drawing dept
architecture & design
3217 madison rd cincinnati ohio 45209
513.272.8099 | www.drawingdept.com
DRAWING DEPT 2022