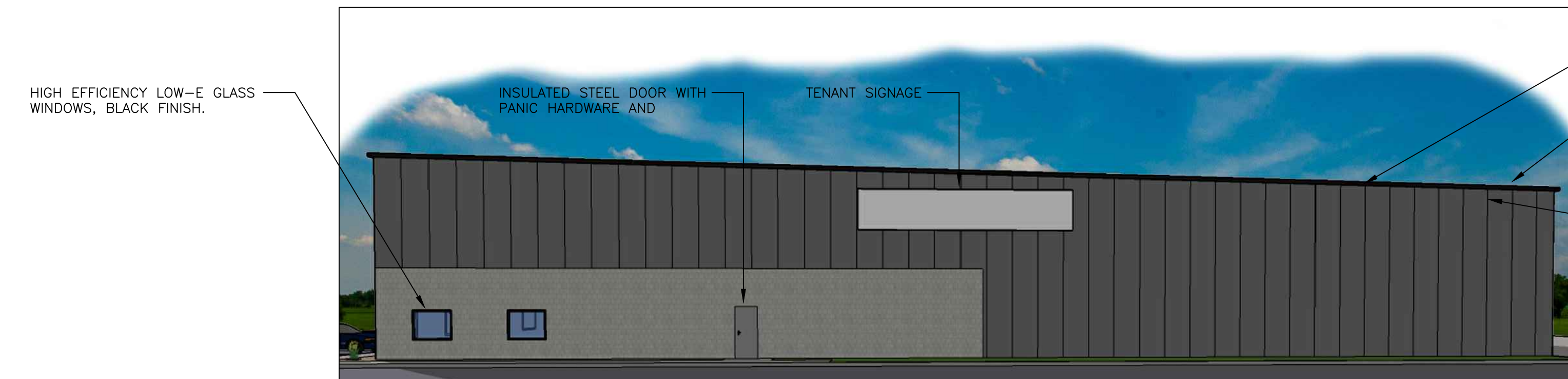


**1 - EAST ELEVATION**

- CABLE TRIM, GUTTERS AND DOWN SPOUTS TO BE BLACK
- BUTLER MR-24 STANDING SEAM ROOF WITH 9-1/2" INSULATION (R-30), 1/4":12" ROOF PITCH
- ⊕ BUILDING EAVE ELEV - 127'-0"
- 3" INSULATED METAL WALL PANEL (R-24) COOL GRAY STONE
- ⊕ BLOCK WALL HEIGHT ELEV - 112'-0"
- 8" SPLIT FACED CMU WALL
- ⊕ FINISHED FLOOR ELEV - 100'-0"



**2 - NORTH ELEVATION**

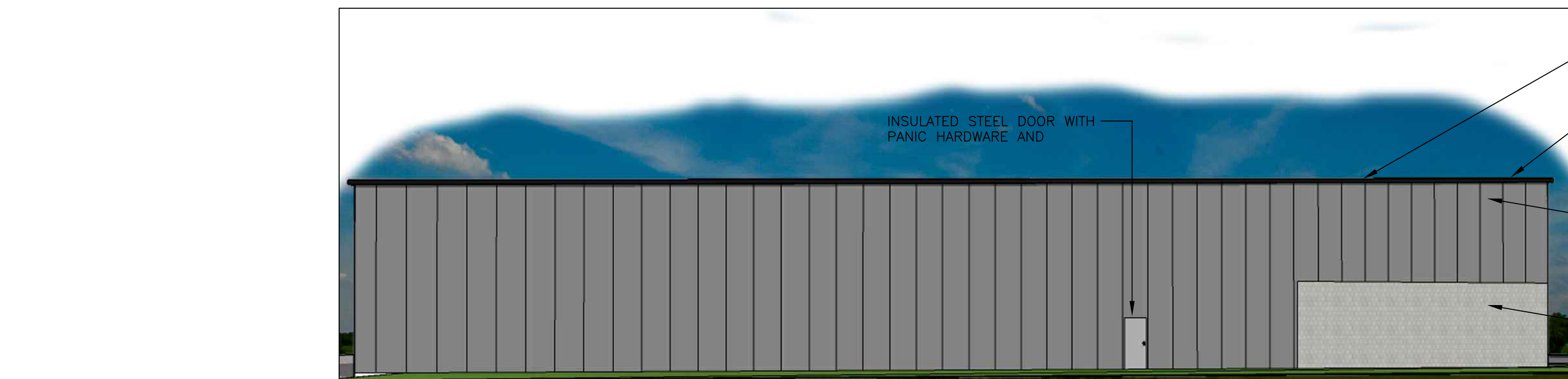
HIGH EFFICIENCY LOW-E GLASS WINDOWS, BLACK FINISH.

- CABLE TRIM, GUTTERS AND DOWN SPOUTS TO BE BLACK
- BUTLER MR-24 STANDING SEAM ROOF WITH 9-1/2" INSULATION (R-30), 1/4":12" ROOF PITCH
- ⊕ BUILDING EAVE ELEV - 123'-8"
- 3" INSULATED METAL WALL PANEL (R-24) COOL GRAY STONE
- ⊕ BLOCK WALL HEIGHT ELEV - 112'-0"
- ⊕ FINISHED FLOOR ELEV - 100'-0"



**3 - WEST ELEVATION**

- CABLE TRIM, GUTTERS AND DOWN SPOUTS TO BE BLACK
- BUTLER MR-24 STANDING SEAM ROOF WITH 9-1/2" INSULATION (R-30), 1/4":12" ROOF PITCH
- ⊕ BUILDING EAVE ELEV - 123'-8"
- 3" INSULATED METAL WALL PANEL (R-24) COOL GRAY STONE
- ⊕ FINISHED FLOOR ELEV - 100'-0"



**4 - SOUTH ELEVATION**

- CABLE TRIM, GUTTERS AND DOWN SPOUTS TO BE BLACK
- BUTLER MR-24 STANDING SEAM ROOF WITH 9-1/2" INSULATION (R-30), 1/4":12" ROOF PITCH
- ⊕ BUILDING EAVE ELEV - 127'-0"
- 3" INSULATED METAL WALL PANEL (R-24) COOL GRAY STONE
- ⊕ BLOCK WALL HEIGHT ELEV - 112'-0"
- 8" SPLIT FACED CMU WALL
- ⊕ FINISHED FLOOR ELEV - 100'-0"