

SITE DIMENSION NOTES

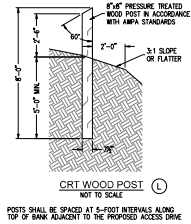
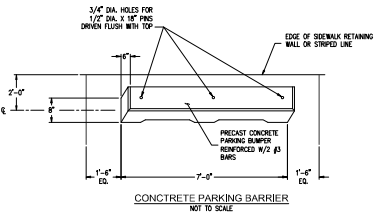
- STREET DIMENSIONS AND LIGHTING SHALL CONFORM TO CITY OF LEBANON STANDARDS. CONTRACTOR SHALL COORDINATE WITH OWNER AND THE CITY OF LEBANON FOR LIGHT FIXTURES AND LAYOUT.
- WATER MAIN INSTALLATION SHALL BE IN ACCORDANCE WITH THE LEBANON WATER STANDARDS AND SPECIFICATIONS. CONTRACTOR SHALL COORDINATE WITH LEBANON WATER FOR PERMITS, CONNECTION AND TESTING PROCEDURES AND REQUIREMENTS.
- CONTRACTOR SHALL NOTIFY ENGINEER OF PROOF ROLL OF SURVEYOR FILES TO DETERMINE IF LINE STABILIZATION OF SURFACE IS NECESSARY.
- CONTRACTOR SHALL PLACE 12" OF CLAY GAP WITHIN THE POND'S SANDY SOILS ARE INCARCERATED.
- ALL ROAD DIMENSIONS ARE TO THE FACE OF PROPOSED CURB.
- SIORAGE SHALL INCLUDE ALL NECESSARY HARDWARE AND FITTINGS, INCLUDING 1/2" X 1/2" TAP FLANGED CHANNEL, SON PILES, REFER TO ARCHITECTURAL PLANS FOR ADDITIONAL SIORAGE. VERIFY CONFLICTS WITH OWNER.
- CONTRACTOR SHALL BE RESPONSIBLE FOR MAINTAINING TRAFFIC AND PROVIDING ALL NECESSARY FLAGMEN, BARRIERS, SIORAGE, ETC DURING CONSTRUCTION. ALL APPLICABLE MULTISTEP STANDARDS SHALL GOVERN THIS WORK.
- CONTRACTOR SHALL COORDINATE WITH APPLICABLE UTILITY COMPANY'S AND RECORD PLANS FOR WATER, CABLE, ELECTRIC, GAS AND TELEPHONE CONNECTION SERVICE POINTS.
- EXISTING UTILITY, SIG, AND MATERIAL INFORMATION SHOWN ON THESE PLANS ARE PER THE BEST GRAPHICAL AND VISIBLE INFORMATION AVAILABLE. CONFLICTS MAY EXIST AND IT SHALL BE THE CONTRACTOR'S RESPONSIBILITY TO FIELD VERIFY ALL SIZES AND MATERIAL INFORMATION PROVIDED. IF ACTUAL CONDITIONS DIFFER FROM THAT INFORMATION SHOWN ON THE PLANS, THE CONTRACTOR SHALL STOP TO THE INSTALLATION OF PROPOSED INFRASTRUCTURE, NOTIFY THE DESIGN ENGINEER IMMEDIATELY.

PARKING ANALYSIS

HIGHWAY MAINTENANCE GARAGE	REQUIRED RATIO = 1 800/EMPLOYEE
	+1 800/COMPANY VEHICLE
# OF EMPLOYEES	= 12
# OF CUSTOMERS	= 3
# OF VEHICLES/EQUIPMENT	= 10-12
TOTAL REQUIRED SPACES	= 27 SPACES
STANDARD PARKING SPACES	= 14 SPACES
HANDICAP ACCESSIBLE SPACES	= 1 SPACE
TOTAL PROPOSED PARKING SPACES	= 15 SPACES
TOTAL SPACES FOR VEHICLE/EQUIPMENT STORAGE	= 12 SPACES

NOTE: NO EARTHWORK EXISTING ACTIVITY MAY COMMENCE UNTIL A STORM WATER MANAGEMENT PERMIT IS OBTAINED.

NOTE: PARKING BARRIERS SHALL BE OF THE DIMENSIONS SHOWN ON THE PLANS. THE BARRIERS SHALL BE CAST AND TESTED IN ACCORDANCE WITH THE APPLICABLE REQUIREMENTS OF 815.03 OF THE MOST RECENT SPECIFICATIONS EXCEPT THE STRENGTH SHALL BE DETERMINED BY CONCRETE CORES TAKEN FROM THE TYPICAL PRODUCT. AT LEAST 2 CONCRETE CORES WILL BE TAKEN FROM EACH UNIT AND THE AVERAGE STRENGTH OF THE UNIT SHALL BE AT LEAST 28 MPa (4000 PSI) WITH NO INDIVIDUAL CORE STRENGTH LESS THAN 25 MPa (3600 PSI).

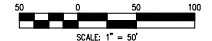


PROPOSED LEGEND

- PROPERTY LINE
- FENCE LINE
- UTILITY CENTER LATERAL
- STORM SEWER MAIN/WAVEROLE
- FORCE MAIN
- ELECTRIC LINE
- WATER LINE
- GAS LINE
- COMMUNICATION LINE
- WATER TEE
- 4\"/>
- WATER VALVE
- FIRE HYDRANT
- SHORTZ FDC
- PTV
- ELECTRIC TRANSFORMER
- AIR CONDENSER UNIT
- GAS METER
- OIL/WATER SEPARATOR
- LIGHTPOLE

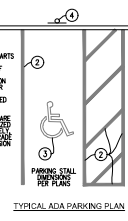
SITE DIMENSION LEGEND

- MULCH SEEDING/LANDSCAPE AREAS
- STRUCTURE FOUNDATION - PER BUILDING PLANS
- STRAIGHT CONCRETE CURB (SEE DETAIL-SHEET 800)
- ROLL CONCRETE CURB AND GUTTER TYPE (SEE DETAIL-SHEET 800)
- CONCRETE CURB THROUGH (SEE DETAIL-SHEET 800)
- CONCRETE SEWAGE (SEE DETAIL-SHEET 800)
- HANDICAP RAMP (SEE DETAIL-SHEET 800)
- PAVEMENT SECTION PENDING GEOTECH REPORT RESULTS
- FINISH
- PAVEMENT SECTION PENDING GEOTECH REPORT RESULTS
- 6\"/>
- CONCRETE ROLLER (SEE DETAIL-SHEET 800)
- PARKING BARRIERS (SEE DETAIL-SHEET 800)
- LIGHT POLE (TYPE, HEIGHT, AND BASE PER OWNER)
- MAINTENANCE GARAGE SIORAGE (PER OWNER)
- LINE, PAINTED SOLID BLUE, 4\"/>
- LINE, PAINTED SOLID BLUE, 4\"/>
- HANDICAP SYMBOL PAINTED BLUE
- HANDICAP PARKING SIGN (SEE DETAIL-SHEET 800)

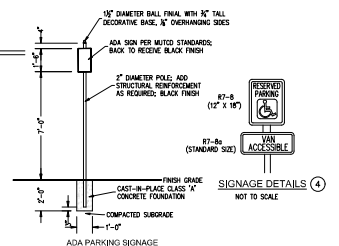


Boundary Curve Table

Curve #	Length	Radius	Chord Direction	Chord Length
C1	296.97'	405.00'	S79°54'47\"/> <td>290.36'</td>	290.36'
C2	6.67'	405.00'	N78°34'47\"/> <td>6.67'</td>	6.67'
C3	315.08'	345.00'	S75°41'59\"/> <td>304.24'</td>	304.24'



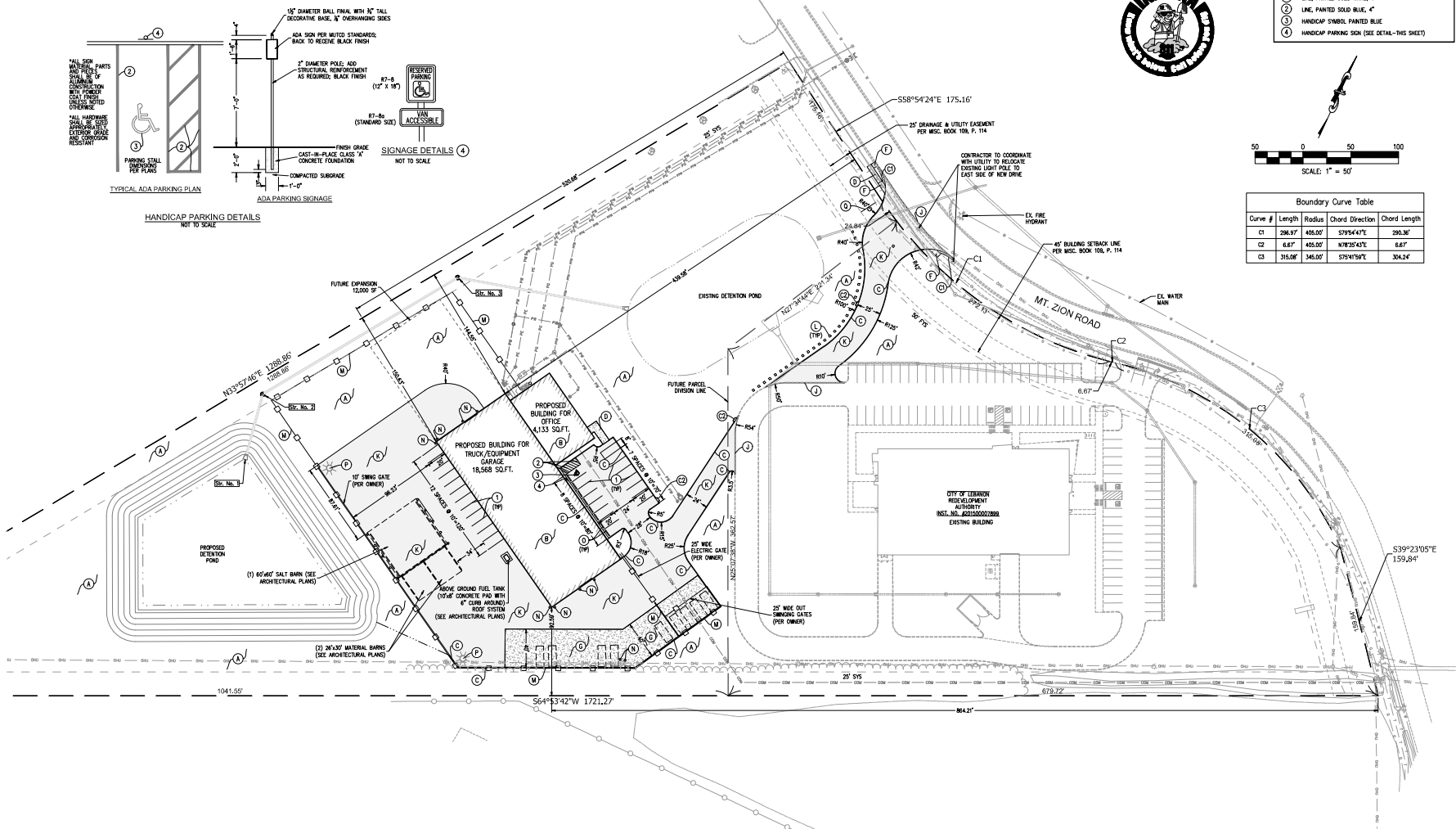
TYPICAL ADA PARKING PLAN



ADA PARKING SIGNAGE

HANDICAP PARKING DETAILS

NOT TO SCALE



SITE DIMENSION PLAN

CITY OF LEBANON HIGHWAY GARAGE

