

September 29, 2021

Mr. John Lightner, PE  
Butler, Fairman, and Seufert, Inc.  
On behalf of Lebanon Utilities  
8450 Westfield Boulevard, Suite 300  
Indianapolis, Indiana 46055

Re: Liberty Village

Dear Mr. Lightner:

Attached is our response to your comments dated September 15, 2021, regarding the above-referenced project.

**General:**

1. Provide a complete full-sized set of the most recent City Standards (Rev. 03/12/2020) attached to the construction drawings.

*This comment has been noted.*

**Water (Lebanon Utilities):**

2. Provide proposed water main sizing.

*The Site Legend has been updated to show the proposed 8-inch ductile iron water main on Sheets C301-302.*

3. Reference Sheet 09 of the City Standards for water main materials. Water mains shall be ductile iron.

*This comment has been noted*

4. Provide profile views of any proposed public water mains.

*This comment has been noted.*

5. Water meters shall be in accordance with the City Standards and locations of water meters shall be indicated on the Construction Drawings.

*This comment has been noted.*

6. The dead-end water main at the end of the cul-de-sac on Shephard Court is not an ideal situation. In that there does not appear to be a potential to loop the proposed water main, a hydrant shall be placed at the end of the line for flushing purposes. Note the Utility Alignment detail for the Cul-De-Sacs on Sheet 03 of the City Standards for placement of the water line and hydrant.

*There is no ideal path to loop the dead-end water main without crossing inbetween lots. Per the phone conversation between the City of Lebanon, Arbor Homes, and American Structurepoint, the water main will be extended through the cul-de-sac and a hydrant placed at the end of the water main line. Sheet C301 has been updated to reflect these changes.*

Provide a completed IDEM Water Main NOI form.

*This comment has been noted.*

#### **Sanitary Sewers (Lebanon Utilities):**

7. Sanitary Sewers shall be SDR-26 in accordance with Sheet 12 of the City Standards.

*Sanitary sewers have been changed to SDR-26. See sheets C301-C302.*

8. In the Construction Drawings, provide profile views of the proposed gravity sanitary sewers.

*This comment has been noted*

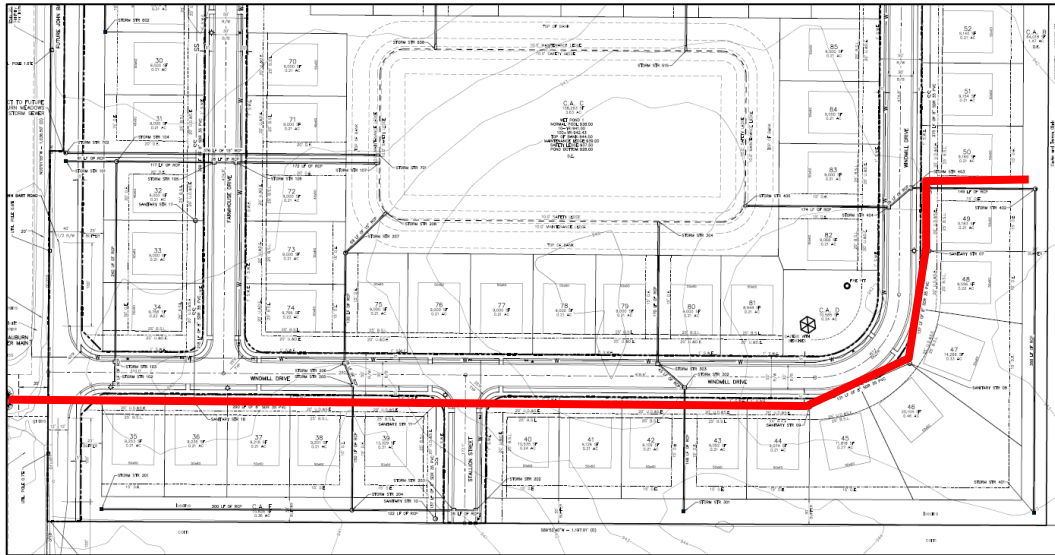
9. Provide a completed IDEM Sanitary Sewer Construction Permit

*This comment has been noted.*

10. It should be noted that the timing of this development will be critical in that its location is in a sanitary sewer basin upstream of issues with the existing wastewater collections system. Adding additional flows upstream will only make these issues worse. Lebanon Utilities is working on a project to correct the downstream issues and provide for additional capacity in the collections system that will accommodate the flows from the proposed development, but that project is still in the design phase.

*This comment has been noted*

11. An Infrastructure Reimbursement Agreement between the Developer and Lebanon Utilities will likely be needed in order to upsize the 8-inch gravity sanitary sewer along the south edge of Windmill drive to a 10-inch gravity sewer in accordance with Lebanon Utilities Wastewater Master Planning. Accordingly, a sanitary sewer stub would need to be provided to the east (potentially in the easement between Lots 49 and 50).



*The 8-inch gravity sanitary sewer along the south edge of Windmill drive has been upsized to a 10-inch gravity sewer in accordance with Lebanon Utilities Wastewater Master Planning. A 10-inch sanitary sewer stub has been added inbetween lots 48 and 49. See sheet C302.*

**Electric (Lebanon Utilities):**

12. The project appears to fall within the Boone County REMC Electric Territory.

*This comment has been noted.*

We feel we have satisfactorily addressed all of the above comments and respectfully request your approval. If you have any questions, please e-mail me at [jcribelar@structurepoint.com](mailto:jcribelar@structurepoint.com) or contact our office at (317) 547-5580.

Very truly yours,  
**American Structurepoint, Inc.**

Joshua H. Cribelar, PE

JHC:dls